



15 YEARS EXPERIENCE

THE BEETHOVEN FENCE

PHYSICAL OBSTACLE - REMOVABLE
EUROPEAN QUALITY

NEW : RIGID PANEL FOR SELF CLOSING GATE

**THIS FENCE HAS BEEN SPECIALLY CREATED FOR THE PROTECTION
OF CHILDREN AROUND THE SWIMMING POOL**



NFP 90 - 306

The Beethoven

drilled ø 16 mm or drilled ø 30 mm

30 mm is advised in windy areas, installation onto grass or defectuous ground



TRANSPARENCY



2 M ACCESS



CHOCOLATE COLOR

Beethoven range of colours :

Black mesh with anodised posts
Black mesh with black posts
Green mesh with anodised posts

Beethoven Prestige range of colours :

White mesh with anodised posts
Green mesh with green posts
Chocolate mesh with chocolate posts

AESTHETIC QUALITIES : TRANSPARENCY

Black mesh, chocolate mesh, green mesh blending into the space. Like plexiglass but no maintenance.

REMOVABLE partly or totally in minutes.

SECTIONS FROM

1 TO 6 METERS AND UP TO 15 M

This choice of length allows a precise layout, and one installation conforms to the standard and less holes in the ground.

ACCESS : at the intersection of 2 sections. The sections are attached one to the other by security hooks. To open it is necessary to bring together the two outside posts stretching the tension by one hand and opening the hook with the other hand : so two actions at the same time. One achieves an opening of one meter on the right and at the same time on the left.

AUTOMATIC SELF CLOSING GATE

NFP 90 – 306 (obligatory for collective pools)
Rigid frame with mesh infill . Mounted on a base, self closes thanks to its spring hinges.
Delivered with 2 keys. Compatible with The Beethoven ø 16 or ø30 mm.

SECURITY

No holds for children to climb.
The fabric will not injure a child that falls on the fence.
Toys cannot pass through or under the fence.
The transparent fabric allows easy supervision.
Protection for animals.
Height 1.22m (conforms NFP 90 – 306)

PURCHASE INFORMATION

EUROPEAN MANUFACTURE AND QUALITY

(quality of the finishes, materials ; the mesh doesn't warp)

An unlimited after sales service on all items.

SECURITY

European manufacture

Sections 1 to 6m and up to 15m on height 1.22m : allows precise layout and placement conforming to the standard

Aluminium posts mounted on mesh for excellent tension

GATES

AUTOMATIC SELF CLOSING GATE

Obligatory for pools with collective use : gites, hotels, co –ownership, carers of children

MANUAL CLOSING

An inox proof hook is mounted at the end of each section. This fixing between each panel constitutes also an access to the pool. The security hook and the tension of the closure require two simultaneous operations with a strenght of 20 newtons. This is a manual security for this mean of access: no break down.

RESISTANCE

RESISTANCE OF THE MESH 3 T / M2

3 Times the resistance required by he standard, treated anti UV

POSTS REINFORCED at their base for maximum holding during bad weather.

FIXING

TWO DRILLING DIAMETERS

The Beethoven 30 mm : excellent holding , advised in windy aereas and on all type of ground : paving, earth, wood, ...

The Beethoven III 16 mm (rapid and easy installation : traditional drill)

AESTHETICS

TOTAL TRANSPARENCY

REMOVABLE in a few minutes, partially or completly. No post or fixing remain in the ground and the holes are protected by caps (conforming to the standard)

MESH NET in polyester + PVC

4 COLORS of mesh : black, green, chocolate or white.

EASY STORAGE AND ADVANTAGES

The Beethoven, thanks to its strength and transparency combines aesthetics with security.



This fence is not a substitute for parental supervision. Don't leave the gate open !

Attention when the fence is combined with one or more than one wall, the walls must not give access to the pool. A height of 1.10 m between 2 supports is necessary.

SELF CLOSING GATE

CONFORMS TO STANDARD AFNOR NFP 90 - 306

Private or collective use / Obligatory for collective pools

This gate is aimed at limiting the access to the pool to children of less than 5 years old.

Guarantee : 1 year - Tested to the LNE file 12 331

DESCRIPTION



OVERALL WIDTH
1030mm

HEIGHT 1235 mm

SUPPORT POSTS
40 mm x 30 mm



FIXING TO THE GROUND on base plate .

POSSIBLE COLOUR CHOICE

Aluminium frame, black lacquer RAL 9005, black net infill

Aluminium frame, green lacquer RAL 6005, green net infill

Aluminium frame, grey lacquer RAL 7047, black, green or white net infill

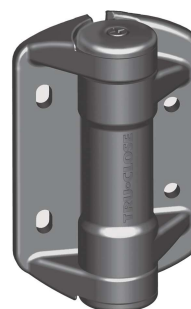
Aluminium frame, chocolate lacquer RAL 8019, chocolate net infill

HARDWAR



LOCK : magna latch Court.

Lock with bottom to pull up to open : inaccessible for children



HINGES : on a spring allowing automatic closure.

Speed of closure controllable

2011 NOVELTY

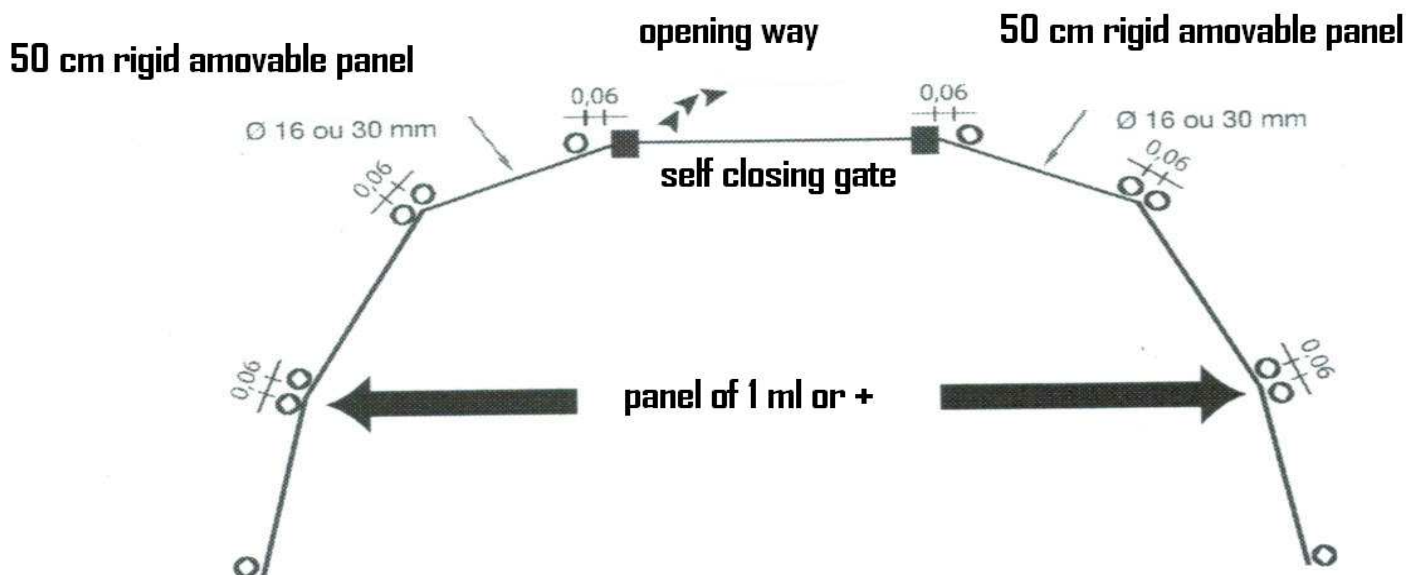
AMOVABLE RIGID PANEL \varnothing 16 or \varnothing 30 mm FOR SELF CLOSING GATE

**Solves the problems of tension near the self closing gate
into right angles or for circular installations**



**25 cm RIGID PANEL INTO RIGHT ANGLES or
50 CM RIGID PANEL FOR CIRCULAR INSTALLATIONS**

INSTALLATION OF THE SELF CLOSING GATE IN A ROUND LINE



INSTALLATION IN PHOTOS

MAKE A PLAN



Take the measurements of the fence in relation to the pool. Make a plan in chalk so that the posts are aligned. Mark with a pen the position of the hole to be drilled.

DRILLING THE PAVEMENT



Drill with a 16 mm bit for Beethoven III or 30 mm bit for Beethoven. Evacuate the dust from the hole then place your sleeve (sleeve sticks once the complete closure is installed).

RESPECT THE SPACE BETWEEN THE HOLES



Place the first post into the sleeve. Tighten the bottom binding and mark the position of the next hole with a pencil. Follow the same procedure with the net as a model to mark the holes then drill the holes one after the others.

SECURITY HOOK



Make the hole for the second section 0.06 cm between post axis, position the sleeve and the post and attach the security hook. Then continue the installation. The rounded side of the post should be on the outside from the pool, the hook should be on the inside.

CUTTING THE MESH



If a cut is necessary, undo the screws on the last posts. Place the post in the required position stretching firstly the top and the bottom stretching the net then re-screw. You won't have the binding on this side, but the appearance and aesthetics of the net will not be affected.

INSTALLATION OF THE SELF CLOSING GATE

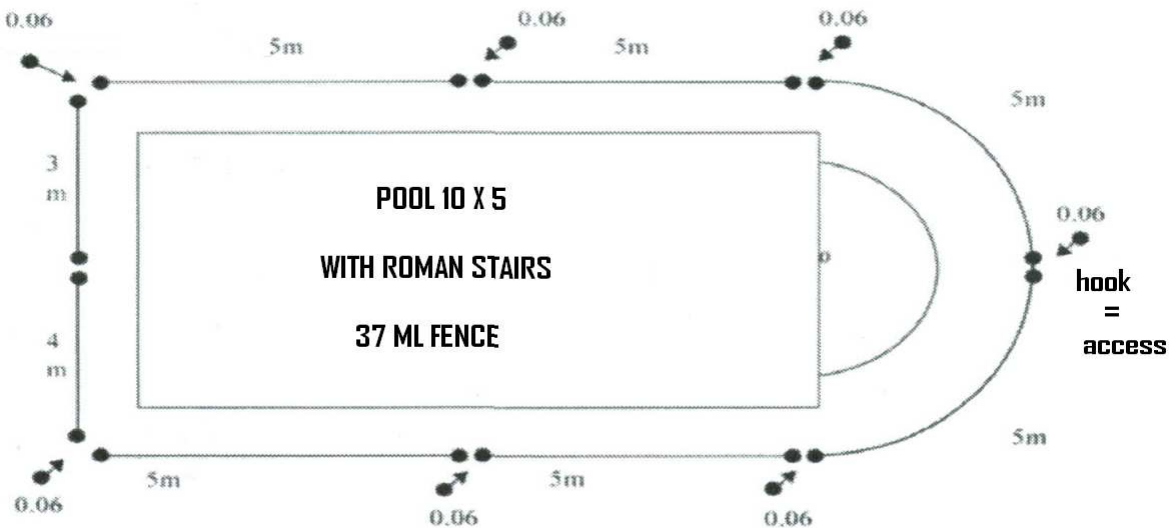
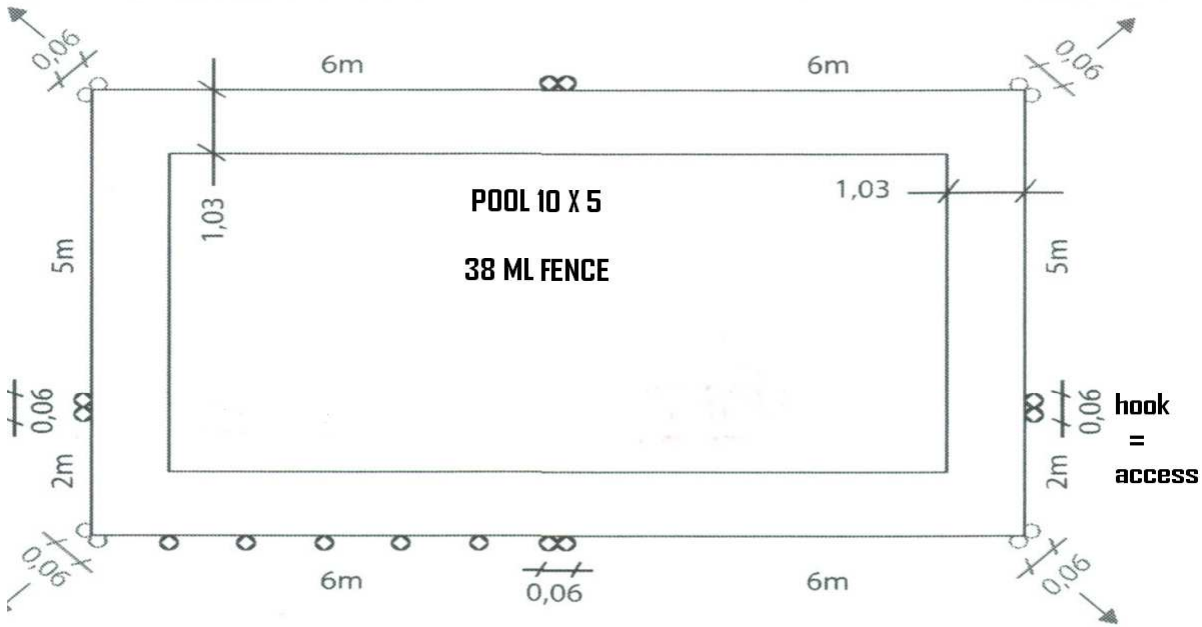


Fix the base with pegs (not supplied). The notch of the lock side base plate serves to bring the post of the fence closer to reduce the space between the gate post and the fence and thus avoids the possibility of a child's hand trying to open the gate.

EXAMPLE OF PLANS

RIGHT ANGLE (corner) ALWAYS 2 POSTS

INTO THE CORNERS ALWAYS TWO POSTS



SOLAR COVERS FOR PERGOLAS

Made to measure



- Polyester mesh coated
- Treated anti ultra violet
- Product quality : 3 tons to 3 square meters resistance
- Doesn't loose its shape, doesn't warp
- Thanks to its openwork design (fine mesh) no danger of it being detached or torn by the wind.
- Thanks to its PVC properties (at compared with textile products) no marks and also thanks to its openwork no maintenance because no deposit can build up.
- Made to measure, any sizes, square or rectangular, fits all supports.
- Beautiful finish with , stainless steel eyelets every 30cms
- White fixing rope supplied
- This cover made with very fine mesh creating a solar screen but allowing ventilation so no sauna effect
- Color beige and cream harmonizing with the environment
- Long life spend without visual change, top of the range cover
- Exellent quality /price ratio direct from industrial manufacturer.
- Square or rectangles shapes

P.S.E : 674 Rte du pont de Pierre – 06480 La Colle sur Loup – France
Tel : 0033 4 93 32 91 89 Fax 0033 4 93 32 91 99
Email : psecurit@wanadoo.fr Web : www.piscine-securite.com
SIRET 409 847 399 00055 N° TVA FR 85409847399